



**B.G.S.**  
**INTERNATIONAL PUBLIC SCHOOL**

# CALENDAR OF Events

**Session- 2024-2025**

*Service to mankind is service to God*

21 YEARS OF EMPOWERING MINDS

## **INTRODUCTORY INSTRUCTIONS**

### **FOR THE SESSION 2024-25**

With the confidence that the divine blessings of our Founder President **His Holiness Jagadguru Parama Poojya Padmabhushana Sri Sri Sri Dr. Balagangadharanatha Mahaswamiji** will guide us at every step, we initiate the new session.

#### **AN INSIGHT INTO BGSIPS**

BGSIPS has steadily climbed the ladder of success through different phases of growth, Now we have reached a point where we are providing meaningful and quality education to students to help them groom their personalities and excel in the fields of their choice.

**Holistic education** is the main aim of BGSIPS; distinction and diversity are its twin hallmarks. We are committed to the cause of instilling moral, intellectual and social values in our students.

The school which started in the year 2003, has carved a niche for itself in the educational hub of Dwarka. It started with 23 students and is now full upto its capacity, working on the motto, "Service to Mankind is Service to God."

We extend a warm welcome to the parents who have admitted their wards to the BGSIPS family in the session 2024-25. We assure you that your association with us will be fruitful and endearing. We also thank our existing parents for bestowing their faith on us in guiding their wards. It is important that the **parent-teacher relation** is strong and healthy, as moulding the child is a joint responsibility. The student teacher ratio has been aptly maintained for effective learning.

#### **JOINING DATE :**

**The New Session** will begin on 1st **April 2024** for all the classes. The students are to report at 7:50 a.m. For **Level II & III**, the school gets over at 12:30 p.m and for **Class I-XII**, at 2:00 p.m.

**Students reporting after 7:50 a.m. will not be allowed to enter the school premises. Self students to enter and exit only through the front gate.**

## INFRASTRUCTURE

The school has grown at a tremendous pace and blossomed into one of the most reputed educational institutions of Dwarka, New Delhi.

The planners of this institution have a clear vision, which is evident from the infrastructure being developed including spacious classrooms, sprawling campus, pleasing landscape and eco-friendly environment.

## STANDARD OPERATING PROCEDURE

- 1 **Calendar of Events** is a supplement to the school diary. The day-to-day schedule is strictly adhered to throughout the session. Changes are strictly limited to unforeseen circumstances only.
- 2 **Saturdays** : All Saturdays are holidays for students. However, the 1st & 3rd Saturdays are working days for teachers. Remedial classes are held for doubt clearing and subject enhancement for students.
- 3 **Activity** : Literary activities are scheduled on Tuesdays, Wednesdays, Thursdays and Fridays for the Preparatory Wing, Foundation Wing, Middle Wing & Senior Wing respectively.
- 4 **Parent Teacher Meetings** are scheduled at regular intervals during the academic session. It is desirable that both parents attend the PTM's . In case it is not possible for both the parents to be present, at least one parent should do so in order to discuss and analyse the performance of their ward(s). **Parents of students from the Foundation Wing can meet the teachers on the 1st and 3rd Saturdays of the month.**
- 5 **Accessibility** : The entire staff of school is accessible to students at any point of time, however trivial the matter may be . We consider it a pleasure to maintain establish close contact and personal rapport with all our students. However, it is expected that parents are reasonable in their demands and suggestions.
- 6 **Communication** : There is continuous interaction between the school and parents through circulars and school website. We would like you to visit us as often as you wish, without, of course, interrupting the school functioning. Please feel free to speak to us in case of any misunderstanding. Communication with the school is open through direct lines as well as email.

- 7 **Dress Code :** Students should adhere to the school dress code strictly and we expect the parents to co-operate with us in this regard. House uniform is to be worn on Wednesdays. Summer uniform is worn from 1st April to 31st October, and winter uniform is worn from 1st November to 31st March.
- 8 **Homework :** The school does not believe in burdening children with home tasks. But what the teacher does in the class is to be recapitulated at home meticulously and regularly. This is what we call as **the Best Homework.**
- 9 **Remedial Classes :** Special classes are held for students on the 1st & 3rd Saturdays for doubt clearing and subject enhancement.
- 10 **Health Education :** The School organises sessions by various specialists to address problems related to health, hygiene and adolescence. First-aid lectures are conducted and documentaries on health education are shown from time to time.
- 11 **Sports / Coaching :** School makes all necessary arrangements for intra and inter-school sports activities, keeping the health of the children in mind and to make them understand the importance of physical education in the real sense. Specialised Training is provided by the school to train students in sports such as Table Tennis, Badminton, Football, Lawn Tennis, Cricket, Skating, Basketball etc. based on their interests. Training in these sports is provided by experienced male and female Physical Education Trainers.
- 12 **Music & Dance :** The school has a well equipped Music room, with all kinds of musical instruments. Students can avail training in Indian, Western, Vocal and Instrumental Music. Students can learn Indian and Western dance forms from our trained dance teachers.
- 13 **Math Lab :** The School has a fully developed Math Lab with unique and novel methods to help students develop and gain knowledge in their numerical skills.
- 14 **Science Labs :** The science laboratories are fully functional, and benefit the students with additional audio-visual facilities.



- 15 **Work Experience** : The school has a well-equipped and aesthetically planned Art Room. All work experience activities (SUPW), Craft, Candle Making, Pot Making etc. are taught to students by trained staff members.
- 16 **Leadership cum Orientation Programmes** : Excursions, Trekking, Nature Camp, Value Education, Personality Development Programmes etc are included in the planner.
- 17 **Birthday** : Students of Foundation & Preparatory Wings only can wear casual dress on their birthdays. Distribution of “ toffees ” only is allowed to avoid disparity among students. Indulging in exchange of gifts or partying in the school campus is strictly forbidden. No casual dress is allowed on birthdays for classes VI-XII
- 18 **Library** : The school library offers a wide range of books in fiction and non-fiction categories besides a huge array of books related to subjects within the regular curriculum. We also have a Class Library in each class room, which is maintained by the respective class teacher. Each student is issued a book every Friday to read during the week.
- 19 **Literary Club** : Debates, Elocutions, Extempores, Creative Writing, Quizzes, School News Letters, Calligraphy, Essay Competitions and celebration of festivals are a major part of our curriculum.
- 20 **Career Counselling** : Career counselling sessions are conducted for senior classes. Eminent personalities from different fields are invited to share their views and experiences with the students so as to motivate and guide them towards their bright future with the right aptitude and attitude.
- 21 **Payment of Fees** : Parents are requested to pay the school fees on time. Late fee of ₹50 per week will be levied if the fee is not paid on the due date which is up to the 10th day of the month, and thereafter, the student's name will be struck off the rolls. Fine is levied for non compliance of instructions, and no plea of ignorance of the rule is accepted. The link for online fee payment is available on the school website.
- 22 **Information Technology** : Computer education is provided to all the classes. School has also added smart class rooms, as it is rightly said, “One seeing is better than a thousand things said or heard”. Each classroom is equipped with digital boards which facilitate innovative patterns in educative curricula.

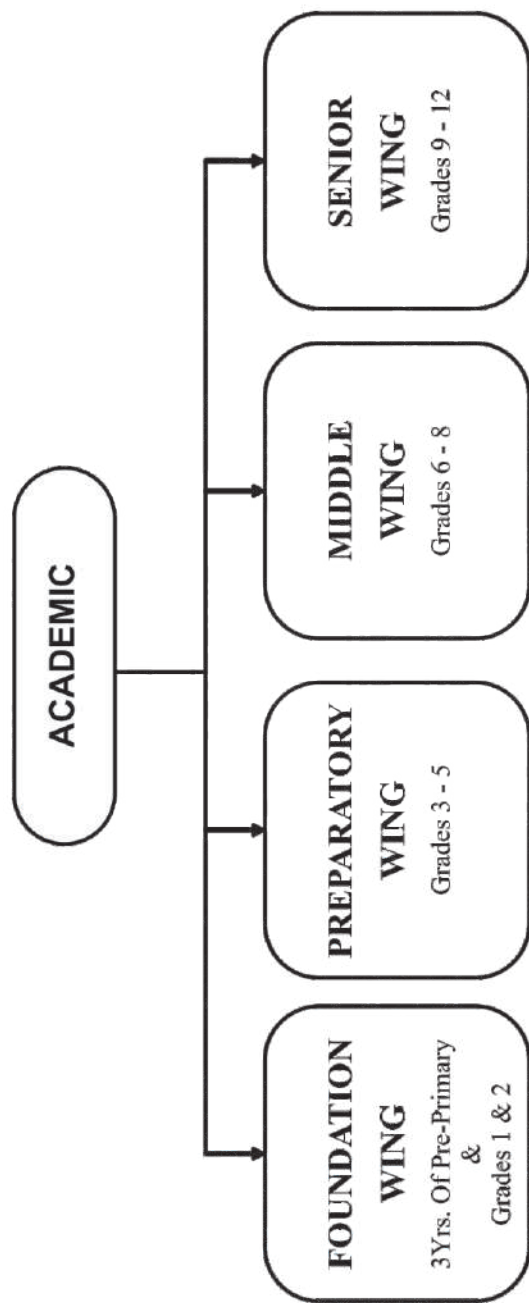
- 23 **Security** : Visitors are requested to comply with the security rules so that proper security and vigilance is maintained. I-cards are compulsory for students and staff. Self students to wear RED TAG, Van students to wear BLUE TAG , Bus students to wear YELLOW TAG. Parents who come to pick up their wards must carry their Parent Cards. No parent is allowed to pick up the child without the gate pass during the school hours.
- 24 **Transportation** : School has a hired transport system. Parents must strictly follow the pick-up and drop timings given to them. Parents interested in availing school transport should apply for the same at the beginning of the session, and should deposit the transport fee for the first quarter before the session starts. **Any request** for withdrawal of transport facility during the session shall not be entertained. Parents of newly admitted students shall drop their wards on the first day of the school, and in the afternoon, they will be shown the bus route to help them decide the pick-up and drop points.

**In case the parents choose to opt for private van / self pickup, a written intimation in this regard must be submitted to the school.**

**We would like to reassure the parents that the 'apple of your eye' whom you have entrusted to our care, will be taken care of, with all the love and affection they well-deserve; and that we are fully conscious of what is expected of us in laying a strong foundation, for not only learning to read and write but also for inculcating a healthy, moral value system in them. We expect wholehearted cooperation from parents, guardians and all our well-wishers, to make it happen. Character building is an arduous task, which can only be accomplished with your valuable support and good wishes.**

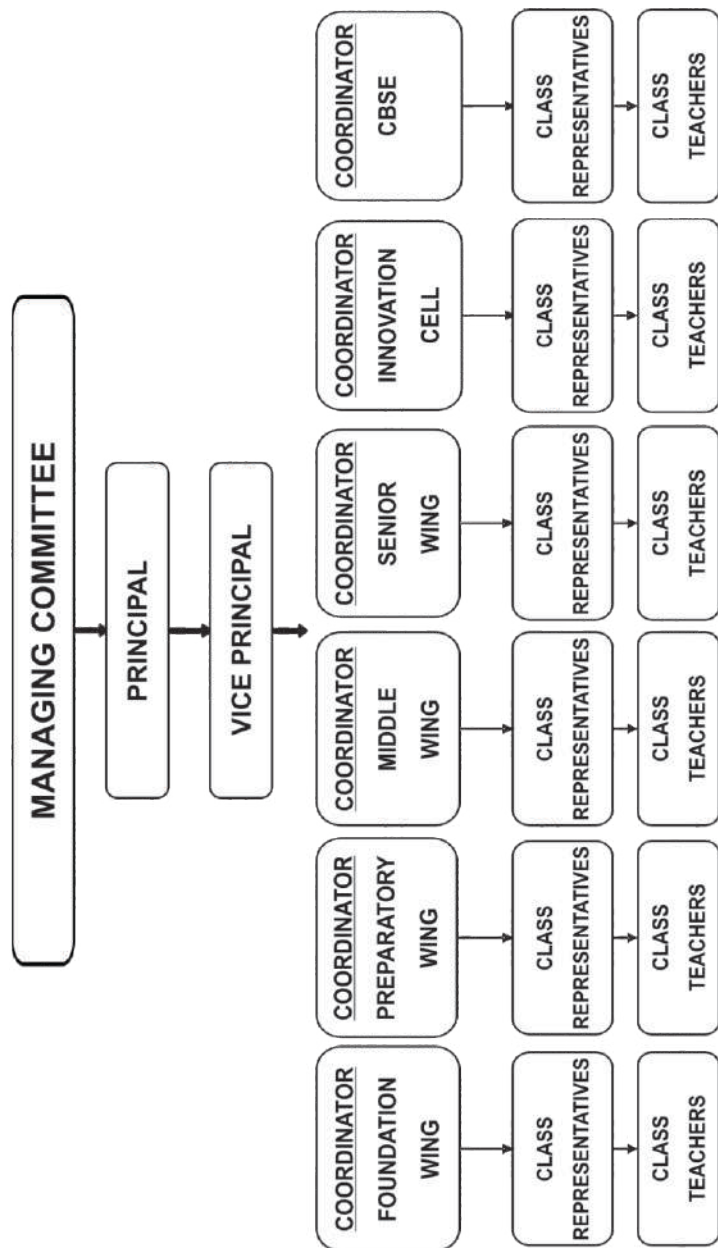
# SCHOOL STRUCTURE

(AS PER NEP 2020)



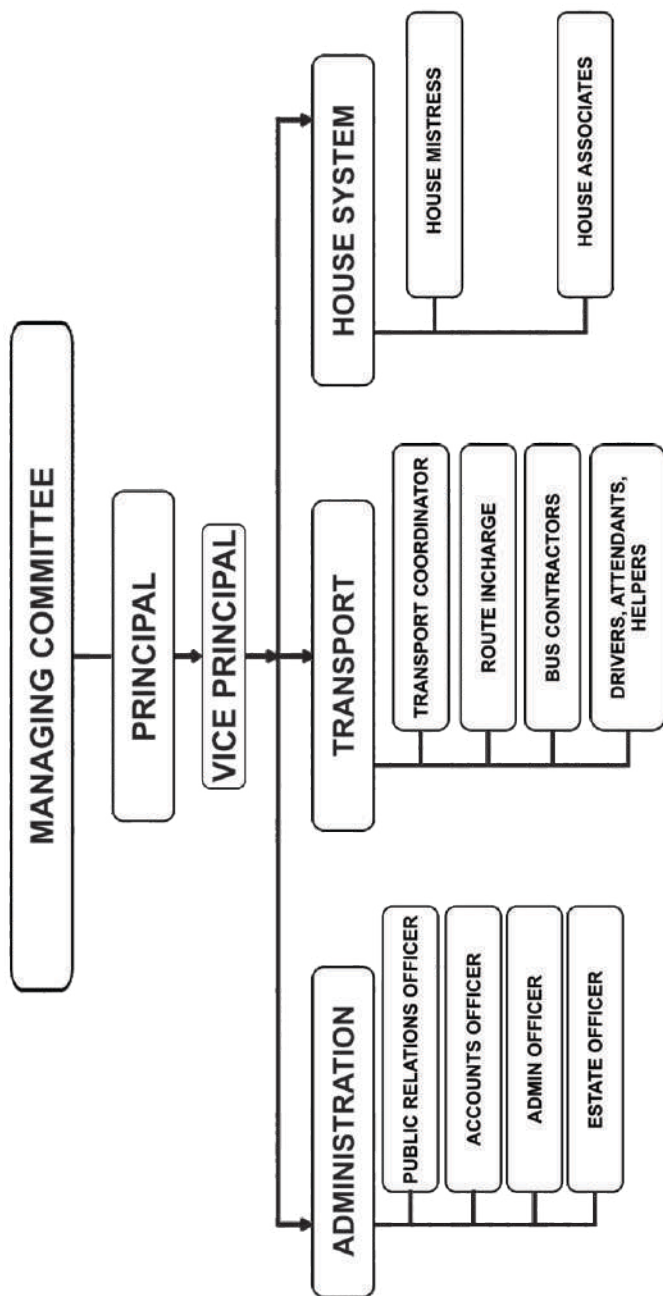
CURRICULUM AND PEDAGOGICAL STRUCTURE = 5 + 3 + 3 + 4

# ACADEMIC FUNCTIONING





## NON ACADEMIC FUNCTIONING



## TEACHERS' TIME TABLE

### SESSION 2024-25

DATE	SUBMISSIONS
28th March	Syllabus to be uploaded
10th May	Classwise summer assignments to be uploaded
12th July	<b>PT I</b> - Two sets of Question Papers with blue print & marking scheme
9th August	<b>PT I</b> - Answer sheets to be handed over to students
27th August	<b>MID TERM</b> - Two sets of Question Papers with blue print & marking scheme
14th October	<b>MID TERM</b> - Answer sheets to be handed over to students
4th November	<b>Mid Term</b> - Report cards & consolidated register for signing
29th November	<b>PT II</b> - Two sets of Question Papers with blue print & marking scheme
15th January	<b>PT II</b> - Answer sheets to be handed over to students
15th January	<b>PT II</b> - Report cards & consolidated register for signing
10th February	<b>FINAL TERM</b> - Two sets of Question Papers with blue print & marking scheme
20th March	<b>FINAL TERM</b> - Report cards & consolidated register for signing

**EXPECTED SCHOLASTIC & CO-SCHOLASTIC LEARNING OUTCOMES  
FOUNDATION WING**

<b>CLASS</b>	<b>MID TERM TEST</b>	<b>FINAL TERM</b>	<b>EXPECTED LEARNING OUTCOMES</b>
<b>LEVEL II</b>	SYLLABUS-BASED ON LEARNING OUTCOMES	SYLLABUS-BASED ON LEARNING OUTCOMES	TO UNDERSTAND & OBEY SIMPLE DIRECTIONS
	ASSESSMENT I	ASSESSMENT II	TO DEVELOP SENSORY MOTOR SKILLS
	MONTH -SEPTEMBER	MONTH -FEBRUARY	TO DEVELOP LISTENING SKILLS
			TO DEVELOP WORK HABITS
			TO RECOGNISE LETTERS & SOUNDS
			TO RECITE POEMS & IDENTIFY OBJECTS
			TO DEVELOP SOCIAL SKILLS
			TO INITIATE POSITIVE ATTITUDE
			TO INTRODUCE VISUAL & PERFORMING ARTS
			TO DEVELOP PHYSICAL STRENGTH

<b>LEVEL III</b>	SYLLABUS-BASED ON LEARNING OUTCOMES	SYLLABUS-BASED ON LEARNING OUTCOMES	TO DEVELOP CONCENTRATION
	ASSESSMENT I	ASSESSMENT II	LEARN TO WRITE LETTERS & NUMBERS
	MONTH -SEPTEMBER	MONTH -FEBRUARY	TO BUILD UP VOCABULARY
			TO REINFORCE WRITING & READING SKILLS
			TO DEVELOP VISUAL PERCEPTION
			TO INTRODUCE VISUAL & PERFORMING ARTS
			TO DEVELOP HABIT OF INITIATION
			TO BUILD UP PHYSICAL HEALTH

## EXPECTED SCHOLASTIC & CO-SCHOLASTIC OUTCOMES FOUNDATION WING

CLASS	MID TERM TEST	FINAL TERM	EXPECTED LEARNING OUTCOMES
I	SYLLABUS-BASED ON	SYLLABUS-BASED ON	TO MAINTAIN REASONABLE ATTENTION SPAN
	LEARNING OUTCOMES	LEARNING OUTCOMES	TO LEARN TO INTERACT WITH PEERS
	ASSESSMENT I	ASSESSMENT II	TO DEVELOP COMMUNICATION SKILLS
	MONTH-SEPTEMBER	MONTH-FEBRUARY	TO ENHANCE VOCABULARY
			TO DEVELOP LOGICAL APPLICATION
			TO DEVELOP APPRECIATION OF VISUAL & PERFORMING ARTS
			TO INCULCATE KINDNESS & PATIENCE
			TO ADD MORAL VALUES
			TO OBEY SCHOOL RULES
			INTRODUCTION TO SPORTS & GAMES

II	SYLLABUS-BASED ON	SYLLABUS-BASED ON	TO INITIATE CREATIVE WRITING
	LEARNING OUTCOMES	LEARNING OUTCOMES	TO INCULCATE READING HABIT
	ASSESSMENT I	ASSESSMENT II	TO INTRODUCE MENTAL MATH SKILLS
	MONTH-SEPTEMBER	MONTH-FEBRUARY	TO INTRODUCE IT SKILLS
			TO BUILD UP VOCABULARY
			TO DEVELOP APPRECIATION OF VISUAL & PERFORMING ARTS
			TO DEVELOP GENERAL AWARENESS
			TO INITIATE ANALYTICAL THINKING & PROBLEM SOLVING
			TO DISPLAY SELF ESTEEM
			TO COMMUNICATE FEELINGS & DESIRES APPROPRIATELY
			TO INSTIL SPIRIT OF SPORTSMANSHIP



## EXPECTED SCHOLASTIC & CO-SCHOLASTIC OUTCOMES PREPARATORY WING

CLASS	PERIODIC TEST-I	MID TERM TEST	PERIODIC TEST-II	FINAL TERM TEST	EXPECTED LEARNING OUTCOMES
III	SYLLABUS-25%	SYLLABUS-50%	SYLLABUS-50%	SYLLABUS-50%	TO DEVELOP IT SKILLS
	MARKS ALLOTTED-40	MARKS ALLOTTED-80	MARKS ALLOTTED-40	MARKS ALLOTTED-80	TO ENHANCE COMMUNICATION SKILLS
	TIME ALLOTTED-1.5 Hrs	TIME ALLOTTED-3 Hrs	TIME ALLOTTED-1.5 Hrs	TIME ALLOTTED-3 Hrs	TO ENHANCE WRITING SKILLS
	MONTH -JULY	MONTH-SEPTEMBER	MONTH-DECEMBER	MONTH - FEBRUARY	TO ENHANCE VOCABULARY
		INTERNAL		INTERNAL	TO INTRODUCE TO PUBLIC SPEAKING
		ASSESSMENT 20 MARKS		ASSESSMENT 20 MARKS	TO DEVELOP MENTAL MATH SKILLS
					TO DEVELOP GENERAL AWARENESS
					TO REINFORCE MORAL VALUES
					TO PARTICIPATE IN VISUAL & PERFORMING ARTS
					TO INITIATE LEARNING OF SPECIALISED GAME
IV	SYLLABUS-25%	SYLLABUS-50%	SYLLABUS-50%	SYLLABUS-50%	TO DEVELOP IT SKILLS
	MARKS ALLOTTED-40	MARKS ALLOTTED-80	MARKS ALLOTTED-40	MARKS ALLOTTED-80	TO ENHANCE LINGUISTIC SKILLS
	TIME ALLOTTED-1.5 Hrs	TIME ALLOTTED-3 Hrs	TIME ALLOTTED-1.5 Hrs	TIME ALLOTTED-3 Hrs	TO ENHANCE SCIENTIFIC TEMPERAMENT
	MONTH -JULY	MONTH-SEPTEMBER	MONTH-DECEMBER	MONTH -FEBRUARY	TO DEVELOP MATHEMATICAL APPLICATION SKILLS
		INTERNAL		INTERNAL	TO CREATE GENERAL AWARENESS
		ASSESSMENT 20 MARKS		ASSESSMENT 20 MARKS	TO CREATE INTEREST IN SOCIAL ACTIVITIES
					TO CREATE VALUE DOMAIN
					TO PARTICIPATE IN VISUAL & PERFORMING ARTS
					TO DEVELOP INTEREST IN SPORTS & GAMES
V	SYLLABUS-25%	SYLLABUS-50%	SYLLABUS-50%	SYLLABUS-50%	TO HELP MASTER IT SKILLS
	MARKS ALLOTTED-40	MARKS ALLOTTED-80	MARKS ALLOTTED-40	MARKS ALLOTTED-80	TO ESTABLISH LINGUISTIC SKILLS
	TIME ALLOTTED-1.5 Hrs	TIME ALLOTTED-3 Hrs	TIME ALLOTTED-1.5 Hrs	TIME ALLOTTED-3 Hrs	TO HELP MASTER SCIENTIFIC PERCEPTION
	MONTH -JULY	MONTH-SEPTEMBER	MONTH-DECEMBER	MONTH -FEBRUARY	TO HELP MASTER APPLICATION SKILLS
		INTERNAL		INTERNAL	TO DEVELOP SENSITIVITY TOWARDS CULTURE & HERITAGE
		ASSESSMENT 20 MARKS		ASSESSMENT 20 MARKS	TO DEVELOP SOCIAL & COMMUNITY SERVICES
					TO ENHANCE VALUE DOMAIN
					TO CREATE GENERAL AWARENESS
					TO BE ABLE TO EXPRESS OPINION
					TO HELP MASTER CREATIVE VISUALISATION
					TO PARTICIPATE IN VISUAL & PERFORMING ARTS
					TO DEVELOP INTEREST IN SPORTS & GAMES

## EXPECTED SCHOLASTIC & CO-SCHOLASTIC OUTCOMES MIDDLE WING

CLASS	PERIODIC TEST-I	MID TERM TEST	PERIODIC TEST-II	FINAL TERM TEST	EXPECTED LEARNING OUTCOMES
VI	SYLLABUS-40% MARKS ALLOTTED-40	SYLLABUS-50% MARKS ALLOTTED-80	SYLLABUS-40% MARKS ALLOTTED-40	SYLLABUS-100% MARKS ALLOTTED-80	TO ENHANCE IT SKILLS
	TIME ALLOTTED-1.5 Hrs	TIME ALLOTTED-3Hrs.	TIME ALLOTTED-1.5 Hrs.	TIME ALLOTTED-3Hrs.	TO ENHANCE READING ABILITY
	MONTH - JULY	MONTH-SEPTEMBER	MONTH-DECEMBER	MONTH -FEBRUARY	TO REINFORCE PUBLIC SPEAKING SKILL
		INTERNAL		INTERNAL ASSESSMENT	TO ENHANCE APPRECIATION OF VISUAL & PERFORMING ARTS
		ASSESSMENT 20 MARKS		20 MARKS	TO DEVELOP SOCIAL & COMMUNITY SERVICES
VII					TO INDUCT EMPATHY
					TO TRAIN FOR PHYSICAL FITNESS
	SYLLABUS-40% MARKS ALLOTTED-40	SYLLABUS-50% MARKS ALLOTTED-80	SYLLABUS-40% MARKS ALLOTTED-40	SYLLABUS-100% MARKS ALLOTTED-80	TO DEVELOP ANALYTICAL SKILLS
	TIME ALLOTTED-1.5 Hrs	TIME ALLOTTED-3Hrs.	TIME ALLOTTED-1.5 Hrs.	TIME ALLOTTED-3Hrs.	TO DEVELOP CAPACITY TO INTEGRATE KNOWLEDGE
	MONTH - JULY	MONTH-SEPTEMBER	MONTH-DECEMBER	MONTH -FEBRUARY	TO ENHANCE APPRECIATION OF VISUAL & PERFORMING ARTS
VIII		INTERNAL		INTERNAL ASSESSMENT	TO TRAIN FOR DISASTER MANAGEMENT
		ASSESSMENT 20 MARKS		20 MARKS	TO HELP THEM STRENGTHEN & GROW EMOTIONALLY
					TO HELP RECOGNISE ETHICS OF CHOICES & ACTIONS
					TO WORK IN COLLABORATION & DEVELOP TEAM SPIRIT
VIII	SYLLABUS-40% MARKS ALLOTTED-40	SYLLABUS-50% MARKS ALLOTTED-80	SYLLABUS-40% MARKS ALLOTTED-40	SYLLABUS-100% MARKS ALLOTTED-80	TO DEVELOP PROBLEM SOLVING STRATEGIES
	TIME ALLOTTED-1.5 Hrs	TIME ALLOTTED-3Hrs.	TIME ALLOTTED-1.5 Hrs.	TIME ALLOTTED-3Hrs.	TO DEVELOP THE ABILITY TO INTEGRATE & APPLY
	MONTH - JULY	MONTH-SEPTEMBER	MONTH-DECEMBER	MONTH -FEBRUARY	TO DEVELOP SCIENTIFIC TEMPERAMENT
		INTERNAL		INTERNAL ASSESSMENT	TO ESTABLISH APPRECIATION OF VISUAL & PERFORMING ARTS
		ASSESSMENT 20 MARKS		20 MARKS	TO DEVELOP CAPACITY TO DESCRIBE & ANALYSE
					TO TRAIN FOR DISASTER PREPAREDNESS

## EXPECTED SCHOLASTIC & CO-SCHOLASTIC OUTCOMES SENIOR WING

CLASS	PERIODIC TEST-I	MID TERM TEST	PERIODIC TEST -II	PREBOARD	FINAL TERM TEST	LEARNING OUTCOMES
	SYLLABUS-40%	SYLLABUS-60%	SYLLABUS-40%	NA	SYLLABUS-100%	TO REINFORCE IT SKILLS
	MARKS ALLOTTED-40	MARKS ALLOTTED-60	MARKS ALLOTTED-40		MARKS ALLOTTED-80	TO PROMOTE PUBLIC SPEAKING SKILL
	TIME ALLOTTED-1.5 Hr	TIME ALLOTTED- 3hrs	TIME ALLOTTED-1.5 Hr		TIME ALLOTTED- 3hrs	TO PROMOTE SOCIAL AND COMMUNITY SERVICES
	MONTH-JULY	MONTH-SEPTEMBER	MONTH-DECEMBER		MONTH-FEBRUARY	TO ENHANCE GENERAL AWARENESS
IX		INTERNAL			INTERNAL ASSESSMENT	TO REINFORCE APPRECIATION OF VISUAL AND PERFORMING ARTS
		ASSESSMENT 20 MARKS			20 MARKS	TO EXCEL IN A CHOSEN GAME
						TO DEVELOP THE CAPACITY TO ANALYSE & EVALUATE
						TO DEVELOP SELF ESTEEM AND SELF CONFIDENCE

x	SYLLABUS-40%	MARKS ALLOTTED-40 TIME ALLOTTED-1.5 Hrs	SYLLABUS-60%	MARKS ALLOTTED-80 TIME ALLOTTED-3 Hrs	SYLLABUS-100%	MARKS ALLOTTED-80 TIME ALLOTTED- 3Hrs.	FINAL TERM	TO DEVELOP IT SKILLS
		MONTH-JULY	MONTH-SEPTEMBER	MONTH-DECEMBER	MONTH-JANUARY			TO ENHANCE PUBLIC SPEAKING SKILLS
								TO PROMOTE SOCIAL AND COMMUNITY SERVICES
								TO ENHANCE GENERAL AWARENESS
			INTERNAL ASSESSMENT 20 MARKS	INTERNAL ASSESSMENT 20 MARKS	INTERNAL ASSESSMENT 20 MARKS			TO DEVELOP COMPETENCY IN VISUAL AND PERFORMING ARTS
								TO EXCEL IN A CHOSEN GAME
								TO DEVELOP THE CAPACITY TO ANALYSE & EVALUATE
								TO ESTABLISH SELF ESTEEM & SELF CONFIDENCE

SYLLABUS-40% MARKS ALLOTTED-40 TIME ALLOTTED-1.5 Hrs	SYLLABUS-60% MARKS ALLOTTED-70/80 TIME ALLOTTED-3 Hrs	NA	SYLLABUS-100% MARKS ALLOTTED-70/80 TIME ALLOTTED-3Hrs	TO EXCEL IN IT SKILLS
MONTH-JULY	MONTH-SEPTEMBER		MONTH- FEBRUARY	TO PARTICIPATE IN SOCIAL AND COMMUNITY SERVICES
PRACTICAL/PROJECT	PRACTICAL/PROJECT		30/20 MARKS	TO ESTABLISH GENERAL AWARENESS
				TO APPRECIATE VISUAL& PERFORMING ARTS
				TO MASTER A CHOSEN GAME
				TO ESTABLISH SELF ESTEEM & SELF CONFIDENCE

	SYLLABUS-40% MARKS ALLOTTED-40 TIME ALLOTTED-1.5 HRS	SYLLABUS-50% MARKS ALLOTTED-70/80 TIME ALLOTTED-3Hrs.	SYLLABUS-100% MARKS ALLOTTED-70/80 TIME ALLOTTED-3Hrs.	SYLLABUS-100% MARKS ALLOTTED-70/80 TIME ALLOTTED-3Hrs.	FINAL TERM	
xii	MONTH-JULY	MONTH-SEPTEMBER	MONTH-DECEMBER	MONTH-JANUARY	MONTH-MARCH	TO EXCEL IN PUBLIC SPEAKING
		PRACTICAL/PROJECT	PRACTICAL/PROJECT	PRACTICAL/PROJECT		TO PARTICIPATE IN SOCIAL AND COMMUNITY SERVICES
		30/20 MARKS	30/20 MARKS	30/20 MARKS		TO ESTABLISH GENERAL AWARENESS
						TO DEVELOP COMPETENCY IN VISUAL & PERFORMING ARTS
						TO MASTER A CHOSEN GAME
						TO DEMONSTRATE SELF ESTEEM & SELF-CONFIDENCE

## SCHEME OF EVALUATION-2024-25

The Final Assessment of the students will be based on complete syllabus. Parents are requested to strictly keep in mind the examination schedule before planning vacations.

**Retest will not be conducted in any of the subjects hence forth.**

Best of two periodic tests will be considered for Internal Assessment.

**Scheme of assessment for Preparatory, Middle and Senior wings is given in Appendix 1 and 2 respectively.**

**Assessment Scheme for Classes III to X is as follows:**

### 1. Scholastic Areas

Total (100 marks)					
Subjects	80 Marks (Board examination/ Final Term) Student has to secure 33% marks out of 80 marks in each subject	20 Marks (Internal Assessment) Student has to secure 33% marks out of 20 marks in each subject			
		Pen Paper Test (5 marks)	Multiple Assessment (5 marks)	Portfolio (5 marks)	Subject Enrichment (5 marks)
Language I	Examination for 80 marks in each subject covering 100% syllabus of the subject.	Periodic Written Test, restricted to three in each subject in an academic year. Average of the best two tests will be taken for final marks submission	Strategies to be used (Quizzes, Oral Test, Concept Map, Exit Cards, Visual Expression etc.)	Class Work Plus Peer Assessment, Achievements of Student in the Subject, Reflections, Narrations, Journals etc.	Speaking and Listening skills
Language II					Speaking and Listening skills
Science	Both Marks and Grades will be awarded for Individual subjects.				Practical Lab Work
Mathematics					Math Lab Project
Social Science	9-point grading will be followed same as in Class XII				Map and Project Work



**( i ) Pen Paper Test (5marks) :**

The school will conduct three periodic written tests in the entire academic year and the average of the best two will be taken . The school has the autonomy to make its own schedule. However , for the purpose of gradient learning, three tests may be held as one being the midterm test and the other two being pre mid and post mid term with portion of syllabus cumulatively covered. The gradually increasing portions of content would prepare students and help them gain confidence for appearing in board examination with 100 % syllabus. The school will take the average of the best two tests for final marks submission.

**( ii ) Multiple Assessment (5 marks) :**

Subject teacher would use different strategies such as quiz, oral test, concept mapping, visual expressions etc. for assessing students.

**( iii ) Portfolio (5 marks) :**

Notebook submission as a part of internal assessment is aimed at ensuring seriousness of students towards preparing notes for the topics taught in the classroom as well as assignments. This also addresses the critical aspect of regularity, punctuality, neatness and notebook upkeep, peer assessment, achievements of students in the subject, reflections, narrations, journals etc.

**( iv ) Subject Enrichment Activities (5 marks) :**

These are subject specific application activities aimed at enrichment of the understanding and skill development. These activities are to be recorded internally by respective subject teachers.

**For Languages :**

Activities conducted for subject enrichment in languages should aim at equipping the learner to develop effective speaking and listening skills.

**For Mathematics :**

The listed laboratory activities and projects as given in the prescribed publication of CBSE / NCERT may be followed.

**For Science :**

The listed practical works / activities will be carried out as prescribed by the CBSE in the curriculum.

**For Social Science :**

Map and project work will be undertaken as prescribed by the CBSE in the curriculum.

## **2. Co- Scholastic Activities :**

School promotes co - curricular activities for the holistic development of the students. These activities are graded on a 5-point grading scale (A to E) and will have no descriptive indicators.

<b>Activity</b>	<b>To be graded on a 5-point scale (A-E) in school</b>	<b>Areas and Objectives (as prescribed in the Scheme of Studies for Subjects of Internal Assessment)</b>
<b>Work Education or Pre- Vocational Education</b>	By the concerned Teacher	It is a distinct curricular area for students for participation in social, economic and welfare activities. Student gets a sense of community service and develops self reliance.
<b>Art Education</b>	By the VA/PA or the concerned Teacher	Art Education constitutes an important area of curricular activity for development of wholesome personality of the students. Students will select one or more forms of creative arts.
<b>Health &amp; Physical Education</b>	By the PE Teacher	Health and Physical education preferably sports must be given a regular period. Students should be provided opportunities to get professionally trained in the area of their interest. Indigenous sports, yoga and NCC must be encouraged in the schools, creating a sense of physical fitness, discipline, sportsmanship, patriotism, self - sacrifice and health care.

## **2. Discipline (Attendance, Sincerity, Behavior, Values) :**

Discipline significantly impacts career shaping and it helps build character, Sincerity, good behaviour and values develop strength and foster unity and co-operation. Therefore, the element of discipline has been introduced. The class teacher is responsible for student grades on a Five Point Scale (A to E)

The internal assessment comprising 20 Marks (5+5+5+5) entails objectivity and a structured approach. For a holistic assessment, the teachers are expected to make it an effective tool.

## SCHEME OF EVALUATION FOR CLASSES XI AND XII (2024-25)

### 1. Scholastic areas

Subjects	Total 100 Marks	
	Theory	Practical/ Internal Assessment
English, Mathematics, Applied Math	80 marks	20 marks
Economics, Political Science, Sociology, Business Studies, Accountancy	80 marks	20 marks
Physics, Chemistry, Biology, Computer Science, Informatics Practices, Psychology, Physical Education	70 marks	30 marks
	Examination for said marks in each subject covering 100 % syllabus . Marks would be awarded for individual subjects. 9 point grading will be followed as per CBSE	Examination for listed practical or project work as per CBSE

### 2. Co-Scholastic Areas

School will promote co-scholastic activities for the holistic development of the student. These activities will be graded on a 5 point grading scale (A to E) and will have no descriptive indicators.

Activity	To be graded on a 5 point scale (A to E) in school	Areas and objectives (as prescribed in the scheme of Studies for subjects of Internal Assessment)
Work Education	By the concerned teacher	It is a distinct area for students for participation in social, economic and welfare activities. Student gets a sense of community service and develops self reliance.
Health and Physical Education	By PE teacher	Health and Physical Education preferably sports must be given a regular period. Students should be provided opportunities to get professionally trained in the area of their interest. Indigeneous sports, Yoga and NCC must be encouraged in the schools creating a sense of physical fitness, discipline, sportsmanship, patriotism, self sacrifice and health care.
General Studies	By the concerned teacher	It is an area where general awareness of student is tested.

# DETAILS OF PERIODIC TESTS AND EXAMINATION SCHEDULE

## PERIODIC TEST I

SESSION 2024-25

JULY (2024)

DAY & DATE	SUBJECT CLASS III	SUBJECT CLASS IV	SUBJECT CLASS V	SUBJECT CLASS VI	SUBJECT CLASS VII	SUBJECT CLASS VIII	SUBJECT CLASS IX	SUBJECT CLASS X	SUBJECT CLASS XI	SUBJECT CLASS XII
WED 24/07/2024	MATH	EVS	MATH	SOCIAL SCIENCE	MATH	SCIENCE	SCIENCE	MATH	MATHS / AM / IP/ PSY	CHEM / BST / SOCIOLOGY
THU 25/07/2024	HINDI	ENGLISH	HINDI	III LANGUAGE	ENGLISH	HINDI	ENGLISH	HINDI	PE	ENGLISH
FRI 26/07/2024	EVS	HINDI	ENGLISH	MATH	HINDI	III LANGUAGE	MATH	SOCIAL SCIENCE	CS / BIO / ECO	PHY / ACCOUNTS / POL. Sci.
MON 29/07/2024	ENGLISH	MATH	EVS	SCIENCE	SOCIAL SCIENCE	MATH	SOCIAL SCIENCE	SCIENCE	CHEM / BST / SOCIOLOGY	MATHS / AM / IP/ PSY
TUE 30/07/2024	WORKING DAY	WORKING DAY	WORKING DAY	ENGLISH	III LANGUAGE	ENGLISH	HINDI	ENGLISH	ENGLISH	PE
WED 31/07/2024	WORKING DAY	WORKING DAY	WORKING DAY	HINDI	SCIENCE	SOCIAL SCIENCE	WORKING DAY	WORKING DAY	PHY / ACCOUNTS / POL. Sci.	CS / BIO / ECO
THU 01/08/2024	WORKING DAY	WORKING DAY	WORKING DAY	WORKING DAY	WORKING DAY	WORKING DAY	WORKING DAY	WORKING DAY	ENT	ENT

Note: PT I

- 1) PT-I will be conducted in zero period.
- 2) Answer sheets will be given to students on 9 August 2024(Friday).



# DETAILS OF PERIODIC TESTS AND EXAMINATION SCHEDULE

**MID TERM**

**SESSION 2024-25**

**SEPTEMBER (2024)**

Day & Date	Subject Class III	Subject Class IV	Subject Class V	Subject Class VI	Subject Class VII	Subject Class VIII	Subject Class IX	Subject Class X	Subject Class XI	Subject Class XII
FRI 13/09/2024	HALF WORKING DAY	HALF WORKING DAY	HALF WORKING DAY	MATH	SCIENCE	SOCIAL SCIENCE	SOCIAL SCIENCE	SCIENCE	CHEM/BSST SOCIO	MATHS/AM /IP/ PSY
TUE 17/09/2024	HALF WORKING DAY	HALF WORKING DAY	HALF WORKING DAY	SOCIAL SCIENCE	MATH	SCIENCE	MATH	SOCIAL SCIENCE	PHY/ ACC. / POL. Sd	ENGLISH
WED 18/09/2024	ENGLISH	ENGLISH	EVS	PREP LEAVE	PREP LEAVE	PREP LEAVE	PREP LEAVE	PREP LEAVE	PREP LEAVE	PREP LEAVE
THU 19/09/2024	PREP LEAVE	PREP LEAVE	PREP LEAVE	III LANGUAGE	ENGLISH	HINDI	HINDI/ SANS/ FRENCH	ENGLISH	ENGLISH	CS/ BIO/ ECO
FRI 20/09/2024	HINDI	EVS	HINDI	PREP LEAVE	PREP LEAVE	PREP LEAVE	PREP LEAVE	PREP LEAVE	PREP LEAVE	PREP LEAVE
MON 23/09/2024	PREP LEAVE	PREP LEAVE	PREP LEAVE	SCIENCE	SOCIAL SCIENCE	MATH	SCIENCE	MATH	MATHS/AM /IP/ PSY	CHEM/BSST SOCIO
TUE 24/09/2024	MATH	MATH	MATH	PREP LEAVE	PREP LEAVE	PREP LEAVE	PREP LEAVE	PREP LEAVE	PREP LEAVE	PREP LEAVE
WED 25/09/2024	PREP LEAVE	PREP LEAVE	PREP LEAVE	HINDI	III LANGUAGE	ENGLISH	ENGLISH	HINDI/ SANS/ FRENCH	CS/ BIO/ ECO	PE
THU 26/09/2024	EVS	HINDI	ENGLISH	PREP LEAVE	PREP LEAVE	PREP LEAVE	PREP LEAVE	PREP LEAVE	ENT	ENT
FRI 27/09/2024	HALF WORKING DAY	HALF WORKING DAY	HALF WORKING DAY	ENGLISH	HINDI	III LANGUAGE	COMP. APPL.	COMP. APPL.	PE	PHY/ ACC. / POL. Sd

**Note: MID TERM**

- 1) Art examination will be held on 06/09/2024 (Friday)
- 2) Practical exam in Computer, Science, Art, Music, will be conducted during their regular classes. Dates will be intimated through diary note.
- 3) Buses will ply at normal school timings in the morning & roll out at 12:30 p.m after the examination.
- 4) Answer sheets will be given to students on 14/10/2024 (Monday)

# DETAILS OF PERIODIC TESTS AND EXAMINATION SCHEDULE

PERIODIC TEST II / PREBOARD-I

SESSION 2024-25

DECEMBER (2024)

Day & Date	Subject Class III	Subject Class IV	Subject Class V	Subject Class VI	Subject Class VII	Subject Class VIII	Subject Class IX	Subject Class X	Subject Class XI	Subject Class XII
FRI 13/12/2024	WORKING DAY	WORKING DAY	WORKING DAY	WORKING DAY	WORKING DAY	WORKING DAY	WORKING DAY	MATH	WORKING DAY	CS/ BIO/ ECO
MON 16/12/2024	WORKING DAY	WORKING DAY	WORKING DAY	WORKING DAY	WORKING DAY	WORKING DAY	WORKING DAY	SOCIAL SCIENCE	WORKING DAY	PHY/ ACC. / POL. Scl
TUE 17/12/2024	HINDI	HINDI	ENGLISH	ENGLISH	HINDI	III LANGUAGE	ENGLISH	PREP LEAVE	CS/ BIO/ ECO	PREP LEAVE
WED 18/12/2024	ENGLISH	MATH	HINDI	MATH	SCIENCE	SOCIAL SCIENCE	SOCIAL SCIENCE	HINDI/ SANSKRIT/ FRENCH	PE	PE
THU 19/12/2024	EVS	ENGLISH	EVS	SOCIAL SCIENCE	MATH	SCIENCE	MATH	PREP LEAVE	CHEM/BSST SOCIO	PREP LEAVE
FRI 20/12/2024	MATH	EVS	MATH	III LANGUAGE	ENGLISH	HINDI	HINDI	ENGLISH	ENGLISH	ENGLISH
MON 23/12/2024	WORKING DAY	WORKING DAY	WORKING DAY	SCIENCE	SOCIAL SCIENCE	MATH	SCIENCE	SCIENCE	PHY/ ACC. / POL. Scl	CHEM/BSST SOCIO
TUE 24/12/2024	WORKING DAY	WORKING DAY	WORKING DAY	HINDI	III LANGUAGE	ENGLISH	WORKING DAY	WORKING DAY	MATHS/ AM IP/ PSY	PREP LEAVE
THU 26/12/2024	WORKING DAY	WORKING DAY	WORKING DAY	WORKING DAY	WORKING DAY	WORKING DAY	WORKING DAY	WORKING DAY	ENT	MATHS/ AM IP/ PSY
FRI 27/12/2024	WORKING DAY	WORKING DAY	WORKING DAY	WORKING DAY	WORKING DAY	WORKING DAY	WORKING DAY	WORKING DAY	WORKING DAY	ENT

## Note: PT II

- 1) Board Practical Examinations of Science for class X will be conducted in the first week of December.
- 2) Periodic Test II are the Preboard I Examination for Class 10 and 12.
- 3) PT II will be conducted in zero period.
- 4) Answer sheets will be given to students of class 9 to 12 on 6/1/2025(Monday) and to students of class 3 to 8 on 15/01/2025 (Wednesday).

## PRE BOARD II

SESSION 2024-25

JANUARY 2025		
	CLASSSS X	CLASSSS XII
Day & Date	SUBJECT	SUBJECT
MON 13/01/2025	SOCIAL SCIENCE	PHY/ ACCOUNTS/ POL.SCI.
WED 15/01/2025	ENGLISH	PE
FRI 17/01/2025	HINDI/ SANSKRIT/ FRENCH	MATH/ AM / IP/ PSY
MON 20/01/2025	SCIENCE	CHEM/ B.ST / SOCIOLOGY
WED 22/01/2025	MATH	ENGLISH
THU 23/01/2025		ENT
FRI 24/01/2025		CS/ BIO/ ECO

# DETAILS OF PERIODIC TESTS AND EXAMINATION SCHEDULE

FINAL TERM

SESSION 2024-25

FEBRUARY (2025)

Day & Date	Subject Class III	Subject Class IV	Subject Class V	Subject Class VI	Subject Class VII	Subject Class VIII	Subject Class IX	Subject Class XI
MON 24/02/2025	WORKING DAY	WORKING DAY	WORKING DAY	SCIENCE	SOCIAL SCIENCE	MATH	HINDI/ SANSKRIT/ FRENCH	PHY/ ACC. / POL. Sci
THU 27/02/2025	PREP. LEAVE	PREP. LEAVE	PREP. LEAVE	SOCIAL SCIENCE	MATH	SCIENCE	MATH	CHEM/BST SOCIOLOGY
FRI 28/02/2025	HINDI	ENGLISH	EVS	PREP. LEAVE	PREP. LEAVE	PREP. LEAVE	PREP. LEAVE	PREP. LEAVE
MON 3/03/2025	PREP. LEAVE	PREP. LEAVE	PREP. LEAVE	ENGLISH	III LANGUAGE	HINDI	SOCIAL SCIENCE	ENGLISH
TUE 4/03/2025	EVS	MATH	ENGLISH	PREP. LEAVE	PREP. LEAVE	PREP. LEAVE	PREP. LEAVE	PREP. LEAVE
WED 5/03/2025	PREP. LEAVE	PREP. LEAVE	PREP. LEAVE	MATH	ENGLISH	III LANGUAGE	ENGLISH	CS/BIO/ ECO
THU 6/03/2025	ENGLISH	HINDI	MATH	PREP. LEAVE	PREP. LEAVE	PREP. LEAVE	PREP. LEAVE	ENT
FRI 7/03/2025	PREP. LEAVE	PREP. LEAVE	PREP. LEAVE	HINDI	SCIENCE	SOCIAL SCIENCE	SCIENCE	PE
MON 10/03/2025	MATH	EVS	HINDI	III LANGUAGE	HINDI	ENGLISH	COMP. APPL.	MATHS/ AM/ IP/ PSY

Note: FINAL TERM

- 1) 24/02/2025 and 25/02/2025 are Teaching Days for Class III-V
- 2) Art examination for class VI to IX will be held on 16/02/2025 (Friday)
- 3) Practical exam of Computer, Science, Art & Music will be conducted during their regular classes. Dates will be intimated through diary note.
- 4) Buses will ply at normal school timings in the morning & roll out at 12:30 p.m after the examination.



<b>MON</b>	1	<b>TD - NEW SESSION COMMENCES</b>
<b>TUE</b>	2	<b>TD - CRAFTY GREETINGS</b>
<b>WED</b>	3	<b>TD - AREA FAMILIARIZATION</b>
<b>THU</b>	4	<b>TD - CARD MAKING</b>
<b>FRI</b>	5	<b>TD - SCIENCE CHALLENGE</b>
<b>SAT</b>	6	<b>REMEDIAL TEACHING</b>
<b>SUN</b>	7	<b>HOLIDAY</b>
<b>MON</b>	8	<b>TD</b>
<b>TUE</b>	9	<b>TD - VERBALIZATION</b>
<b>WED</b>	10	<b>TD - WORKSHOP ON SOCIAL GRACES</b>
<b>THU</b>	11	<b>HOLIDAY - ID-UL-FITR</b>
<b>FRI</b>	12	<b>TD - CAREER COUNSELLING</b>
<b>SAT</b>	13	<b>HOLIDAY - SECOND SATURDAY</b>
<b>SUN</b>	14	<b>HOLIDAY</b>
<b>MON</b>	15	<b>TD</b>
<b>TUE</b>	16	<b>TD - EXPERIMATICS</b>
<b>WED</b>	17	<b>HOLIDAY - RAM NAVAMI</b>
<b>THU</b>	18	<b>TD - VISIT TO PLANETARIUM</b>
<b>FRI</b>	19	<b>TD - EXPRESSIONS</b>
<b>SAT</b>	20	<b>REMEDIAL TEACHING</b>
<b>SUN</b>	21	<b>HOLIDAY</b>
<b>MON</b>	22	<b>TD</b>
<b>TUE</b>	23	<b>TD - RESTORE OUR EARTH</b>
<b>WED</b>	24	<b>TD - OUR SPHERE</b>
<b>THU</b>	25	<b>TD - EXPLORER</b>
<b>FRI</b>	26	<b>TD - INVEST IN OUR PLANET</b>
<b>SAT</b>	27	<b>HOLIDAY - FOURTH SATURDAY</b>
<b>SUN</b>	28	<b>HOLIDAY</b>
<b>MON</b>	29	<b>TD</b>
<b>TUE</b>	30	<b>TD - VISIT TO PLANETARIUM</b>

**Working Days**    **22**
**NATIONAL & INTERNATIONAL DAYS**

<b>FRI</b>	5	<b>National Maritime Day</b>
<b>SUN</b>	7	<b>World No Smoking Day</b>
<b>SUN</b>	14	<b>Fire Service Day</b>
<b>SUN</b>	14	<b>Ambedkar Jayanti</b>
<b>THU</b>	18	<b>World Heritage Day</b>
<b>TUE</b>	22	<b>Earth Day</b>

**Wednesday Activities are for Level-II to Class-II**
**Tuesday Activities are for Classes III to V**
**Thursday Activities are for Classes VI to VIII**
**Friday Activities are for Classes IX to XII**
**Sports Activities (Matches) will be organised on monthly basis**
*Please Note : Holidays are subject to change as per Govt. notifications.*

<b>WED</b>	1	TD - VISIT TO AIR-FORCE MUSEUM/ SPECIAL ASSEMBLY
<b>THU</b>	2	TD - OUR INDUSTRIOUS CLAN
<b>FRI</b>	3	TD - TURN THE TABLE
<b>SAT</b>	4	REMEDIAL TEACHING
<b>SUN</b>	5	HOLIDAY
<b>MON</b>	6	TD
<b>TUE</b>	7	TD - DAY WITH DENTIST
<b>WED</b>	8	TD - FRUIT BONANZA
<b>THU</b>	9	TD - WORKSHOP ON CYBER SAFETY
<b>FRI</b>	10	TD - INVESTITURE CEREMONY
<b>SAT</b>	11	PTM - I
<b>SUN</b>	12	HOLIDAY
<b>MON</b>	13	TD - Summer Vacation For Level-II to Class VIII / BRIDGE COURSE
<b>TUE</b>	14	TD
<b>WED</b>	15	TD
<b>THU</b>	16	TD
<b>FRI</b>	17	TD
<b>SAT</b>	18	LEADERSHIP CAMP FOR CLASS IX TO XII
<b>SUN</b>	19	HOLIDAY
<b>MON</b>	20	WORKING DAY FOR TEACHERS
<b>TUE</b>	21	WORKING DAY FOR TEACHERS
<b>WED</b>	22	Summer Vacation Commences
<b>THU</b>	23	HOLIDAY - BUDDH PURNIMA
<b>FRI</b>	24	<div style="display: flex; justify-content: space-around;"> <div style="writing-mode: vertical-rl; transform: rotate(180deg);">S U M M E R</div> <div style="writing-mode: vertical-rl; transform: rotate(180deg);">V A C A T I O N</div> </div>
<b>SAT</b>	25	
<b>SUN</b>	26	
<b>MON</b>	27	
<b>TUE</b>	28	
<b>WED</b>	29	
<b>THU</b>	30	
<b>FRI</b>	31	

<b>Working Days</b>	<b>17</b>	<b>Wednesday Activities are for Level-II to Class-II</b>
<b>NATIONAL &amp; INTERNATIONAL DAYS</b>		<b>Tuesday Activities are for Classes III to V</b>
<b>WED</b>	1	Worker's Day
<b>WED</b>	8	Red Cross Day
<b>MON</b>	13	National Solidarity Day
<b>WED</b>	15	International Day of the Family
<b>FRI</b>	17	World Communication Day
<b>TUE</b>	21	Anti Terrorism day
<b>THU</b>	30	World No Tobacco Day
		<b>Thursday Activities are for Classes VI to VIII</b>
		<b>Friday Activities are for Classes IX to XII</b>
		<b>Sports Activities (Matches) will be organised on monthly basis</b>

*Please Note : Holidays are subject to change as per Govt. notifications.*

SAT	1	
SUN	2	
MON	3	
TUE	4	
WED	5	<b>S U M M E R</b>
THU	6	
FRI	7	
SAT	8	
SUN	9	
MON	10	
TUE	11	
WED	12	
THU	13	
FRI	14	
SAT	15	<b>V A C A T I O N</b>
SUN	16	
MON	17	
TUE	18	
WED	19	
THU	20	
FRI	21	
SAT	22	
SUN	23	
MON	24	TD - SCHOOL REOPENS FOR IX TO XII
TUE	25	TD
WED	26	TD
THU	27	TD
FRI	28	TD
SAT	29	<b>HOLIDAY</b>
SUN	30	<b>HOLIDAY</b>

**Working Days**      **05**

**NATIONAL & INTERNATIONAL DAYS**

WED      5      World Environment Day

Wednesday Activities are  
for Level-II to Class-II

Tuesday Activities are for  
Classes III to V

Thursday Activities are for  
Classes VI to VIII

Friday Activities are for  
Classes IX to XII

Sports Activities (Matches)  
will be organised on  
monthly basis

*Please Note : Holidays are subject to change as per Govt. notifications.*

<b>MON</b>	1	<b>TD - SCHOOL REOPENS FOR LEVEL II TO CLASS VIII</b>
<b>TUE</b>	2	<b>TD - TRASH TURNER</b>
<b>WED</b>	3	<b>TD - VERSE-A-TALITY</b>
<b>THU</b>	4	<b>TD - PROJECT EXPLORER</b>
<b>FRI</b>	5	<b>TD - PROJECT EXPLORER</b>
<b>SAT</b>	6	<b>REMEDIAL TEACHING</b>
<b>SUN</b>	7	<b>HOLIDAY</b>
<b>MON</b>	8	<b>TD</b>
<b>TUE</b>	9	<b>TD - TIE AND DYE</b>
<b>WED</b>	10	<b>TD - MY HAND IMPRESSIONS</b>
<b>THU</b>	11	<b>TD - PROJECT PROGRESSION</b>
<b>FRI</b>	12	<b>TD - PROJECT PROGRESSION</b>
<b>SAT</b>	13	<b>SECOND SATURDAY - HOLIDAY</b>
<b>SUN</b>	14	<b>HOLIDAY</b>
<b>MON</b>	15	<b>TD</b>
<b>TUE</b>	16	<b>TD - FABRIC ART</b>
<b>WED</b>	17	<b>HOLIDAY - MUHARRAM</b>
<b>THU</b>	18	<b>TD - SCIENCE TOON</b>
<b>FRI</b>	19	<b>TD - HOLIDAY FOR LEVEL II TO VIII/ HWD FOR CLASSES IX TO XII</b>
<b>SAT</b>	20	<b>PROJECT EXHIBITION- L' EXPOSITION</b>
<b>SUN</b>	21	<b>HOLIDAY</b>
<b>MON</b>	22	<b>TD</b>
<b>TUE</b>	23	<b>TD - WORKSHOP ON CYBER SAFETY</b>
<b>WED</b>	24	<b>TD - PATTERNS IN NATURE / PT-1 COMMENCES</b>
<b>THU</b>	25	<b>TD</b>
<b>FRI</b>	26	<b>TD</b>
<b>SAT</b>	27	<b>FOURTH SATURDAY - HOLIDAY</b>
<b>SUN</b>	28	<b>HOLIDAY</b>
<b>MON</b>	29	<b>TD</b>
<b>TUE</b>	30	<b>TD - KAVYANJALI</b>
<b>WED</b>	31	<b>TD - WORKSHOP ON FIRST AID / PT-1 CONCLUDES</b>

<b>Working Days</b>	<b>24</b>	<b>Wednesday Activities are for Level-II to Class-II</b>
<b>NATIONAL &amp; INTERNATIONAL DAYS</b>		<b>Tuesday Activities are for Classes III to V</b>
<b>THU</b>	<b>11</b>	<b>World Population Day</b>
<b>FRI</b>	<b>26</b>	<b>Kargil Vijay Diwas</b>
<b>FRI</b>	<b>26</b>	<b>World Family Day</b>
		<b>Thursday Activities are for Classes VI to VIII</b>
		<b>Friday Activities are for Classes IX to XII</b>
		<b>Sports Activities (Matches) will be organised on monthly basis</b>

*Please Note : Holidays are subject to change as per Govt. notifications.*



<b>THU</b>	1	<b>TD - OUR CONSTITUTION OUR PRIDE</b>
<b>FRI</b>	2	<b>TD - HERITAGE QUIZ</b>
<b>SAT</b>	3	<b>REMEDIAL TEACHING</b>
<b>SUN</b>	4	<b>HOLIDAY</b>
<b>MON</b>	5	<b>TD</b>
<b>TUE</b>	6	<b>TD - KNOW OUR COUNTRY</b>
<b>WED</b>	7	<b>TD - CHARACTER DEPICTION</b>
<b>THU</b>	8	<b>TD - MERE SAPNO KA BHARAT</b>
<b>FRI</b>	9	<b>TD - INDIA OF MY VISION</b>
<b>SAT</b>	10	<b>SECOND SATURDAY - HOLIDAY</b>
<b>SUN</b>	11	<b>HOLIDAY</b>
<b>MON</b>	12	<b>TD</b>
<b>TUE</b>	13	<b>TD</b>
<b>WED</b>	14	<b>TD - INDEPENDENCE DAY CELEBRATIONS</b>
<b>THU</b>	15	<b>HOLIDAY - INDEPENDENCE DAY/ HWD FOR TEACHERS</b>
<b>FRI</b>	16	<b>TD</b>
<b>SAT</b>	17	<b>PTM - II</b>
<b>SUN</b>	18	<b>HOLIDAY</b>
<b>MON</b>	19	<b>HOLIDAY - RAKSHABANDHAN</b>
<b>TUE</b>	20	<b>TD - BRAIN TEASER</b>
<b>WED</b>	21	<b>TD - MY GRATITUDE JAR</b>
<b>THU</b>	22	<b>TD - VISIT TO P.M MUSEUM</b>
<b>FRI</b>	23	<b>TD - START-UP WAR</b>
<b>SAT</b>	24	<b>FOURTH SATURDAY - HOLIDAY</b>
<b>SUN</b>	25	<b>HOLIDAY</b>
<b>MON</b>	26	<b>HOLIDAY - JANMASHTAMI</b>
<b>TUE</b>	27	<b>TD - FINANCIAL LITERACY</b>
<b>WED</b>	28	<b>TD - SADAK SURAKSHA</b>
<b>THU</b>	29	<b>TD - KHELO INDIA</b>
<b>FRI</b>	30	<b>TD - KHELO INDIA</b>
<b>SAT</b>	31	<b>REMEDIAL TEACHING</b>

**Working Days 22**
**NATIONAL & INTERNATIONAL DAYS**

<b>TUE</b>	6	<b>Hiroshima Day</b>
<b>THU</b>	8	<b>Senior Citizen Day</b>
<b>FRI</b>	9	<b>Nagasaki Day / Quit India Day</b>
<b>THU</b>	15	<b>Independence Day</b>
<b>TUE</b>	20	<b>Sadbhavana Day</b>
<b>THU</b>	29	<b>National Sports Day</b>

**Wednesday Activities are for Level-II to Class-II**
**Tuesday Activities are for Classes III to V**
**Thursday Activities are for Classes VI to VIII**
**Friday Activities are for Classes IX to XII**
**Sports Activities (Matches) will be organised on monthly basis**
*Please Note : Holidays are subject to change as per Govt. notifications.*

<b>SUN</b>	1	<b>HOLIDAY</b>
<b>MON</b>	2	<b>TD</b>
<b>TUE</b>	3	<b>TD - SPIN A YARN</b>
<b>WED</b>	4	<b>TD - STICKY WORDS</b>
<b>THU</b>	5	<b>TEACHER'S DAY CELEBRATIONS</b>
<b>FRI</b>	6	<b>TD - WORKSHOP ON BANKING PROCEDURES</b>
<b>SAT</b>	7	<b>REMEDIAL TEACHING</b>
<b>SUN</b>	8	<b>HOLIDAY</b>
<b>MON</b>	9	<b>TD</b>
<b>TUE</b>	10	<b>TD - NOBEL LAUREATES</b>
<b>WED</b>	11	<b>TD - KNOW AND TELL</b>
<b>THU</b>	12	<b>TD</b>
<b>FRI</b>	13	<b>TD - MID-TERM EXAMINATION COMMENCES</b>
<b>SAT</b>	14	<b>HOLIDAY - SECOND SATURDAY</b>
<b>SUN</b>	15	<b>HOLIDAY</b>
<b>MON</b>	16	<b>HOLIDAY - EID-E-MILAD</b>
<b>TUE</b>	17	<b>TD</b>
<b>WED</b>	18	<b>TD - PAPER CRAFT</b>
<b>THU</b>	19	<b>TD</b>
<b>FRI</b>	20	<b>TD</b>
<b>SAT</b>	21	<b>REMEDIAL TEACHING</b>
<b>SUN</b>	22	<b>HOLIDAY</b>
<b>MON</b>	23	<b>TD</b>
<b>TUE</b>	24	<b>TD</b>
<b>WED</b>	25	<b>TD - DAY WITH POTTER</b>
<b>THU</b>	26	<b>TD</b>
<b>FRI</b>	27	<b>TD - MID-TERM EXAM CONCLUDES</b>
<b>SAT</b>	28	<b>HOLIDAY - FOURTH SATURDAY</b>
<b>SUN</b>	29	<b>HOLIDAY</b>
<b>MON</b>	30	<b>TD</b>

**Working Days 22**
**NATIONAL & INTERNATIONAL DAYS**

<b>THU</b>	5	<b>Teacher's Day</b>
<b>SUN</b>	8	<b>INTERNATIONAL LITERARY DAY</b>
<b>MON</b>	16	<b>World Ozone Day</b>
<b>THU</b>	26	<b>Day of the Deaf</b>
<b>FRI</b>	27	<b>World Tourism Day</b>

**Wednesday Activities are for Level-II to Class-II**
**Tuesday Activities are for Classes III to V**
**Thursday Activities are for Classes VI to VIII**
**Friday Activities are for Classes IX to XII**
**Sports Activities (Matches) will be organised on monthly basis**
*Please Note : Holidays are subject to change as per Govt. notifications.*

<b>TUE</b>	1	<b>TD - SHARE YOUR RECIPE</b>
<b>WED</b>	2	<b>GANDHI JAYANTI - HOLIDAY</b>
<b>THU</b>	3	<b>TD - MYTHOLOGICAL QUIZ</b>
<b>FRI</b>	4	<b>TD - SWACHTA MISSION</b>
<b>SAT</b>	5	<b>REMEDIAL TEACHING</b>
<b>SUN</b>	6	<b>HOLIDAY</b>
<b>MON</b>	7	<b>TD</b>
<b>TUE</b>	8	<b>TD - MYTHOLOGICAL SAGA</b>
<b>WED</b>	9	<b>TD - PEACE GARDEN</b>
<b>THU</b>	10	<b>HOLIDAY</b>
<b>FRI</b>	11	<b>HOLIDAY</b>
<b>SAT</b>	12	<b>HOLIDAY - DUSSEHRA</b>
<b>SUN</b>	13	<b>HOLIDAY</b>
<b>MON</b>	14	<b>TD</b>
<b>TUE</b>	15	<b>TD</b>
<b>WED</b>	16	<b>TD - MYTHOLOGICAL SAGA</b>
<b>THU</b>	17	<b>HOLIDAY - VALMIKI JAYANTI</b>
<b>FRI</b>	18	<b>TD</b>
<b>SAT</b>	19	<b>REMEDIAL TEACHING</b>
<b>SUN</b>	20	<b>HOLIDAY</b>
<b>MON</b>	21	<b>TD</b>
<b>TUE</b>	22	<b>TD - GANIT CHALLENGE</b>
<b>WED</b>	23	<b>TD - WORLD AROUND US</b>
<b>THU</b>	24	<b>TD</b>
<b>FRI</b>	25	<b>TD</b>
<b>SAT</b>	26	<b>TD</b>
<b>SUN</b>	27	<b>HOLIDAY - GRAND REHEARSAL</b>
<b>MON</b>	28	<b>HONOURS' DAY</b>
<b>TUE</b>	29	<b>WORKING DAY FOR TEACHERS</b>
<b>WED</b>	30	<b>HOLIDAY</b>
<b>THU</b>	31	<b>DIWALI</b>

<b>Working Days</b>		<b>20</b>	<b>Wednesday Activities are for Level-II to Class-II</b>
<b>NATIONAL &amp; INTERNATIONAL DAYS</b>			<b>Tuesday Activities are for Classes III to V</b>
<b>FRI</b>	4	World Animal Day	<b>Thursday Activities are for Classes VI to VIII</b>
<b>SAT</b>	5	World Habitat Day	
<b>TUE</b>	8	Air Force Day/ World Elder's Day	<b>Friday Activities are for Classes IX to XII</b>
<b>WED</b>	9	Territorial Army Day/ World Post Day	
<b>THU</b>	10	National Post Day	<b>Sports Activities (Matches) will be organised on monthly basis</b>
<b>SUN</b>	13	National Disaster Reduction Day	
<b>MON</b>	14	World standards Day	
<b>WED</b>	16	World Food Day	
<b>THU</b>	24	United Nations Day	
<b>WED</b>	30	World Thrift Day	
<b>THU</b>	31	National Integration Day	

*Please Note : Holidays are subject to change as per Govt. notifications.*

<b>FRI</b>	1	<b>HOLIDAY - DIWALI</b>
<b>SAT</b>	2	<b>HOLIDAY</b>
<b>SUN</b>	3	<b>HOLIDAY</b>
<b>MON</b>	4	<b>TD</b>
<b>TUE</b>	5	<b>TD - ROLL ON WHEELS</b>
<b>WED</b>	6	<b>TD - IGNITED MINDS</b>
<b>THU</b>	7	<b>TD - WORKSHOP ON MENTAL WELL BEING</b>
<b>FRI</b>	8	<b>TD - THEATRE WORKSHOP</b>
<b>SAT</b>	9	<b>PTM-3</b>
<b>SUN</b>	10	<b>HOLIDAY</b>
<b>MON</b>	11	<b>TD</b>
<b>TUE</b>	12	<b>TD - SPELLING STONE</b>
<b>WED</b>	13	<b>TD - PUPPET SHOW</b>
<b>THU</b>	14	<b>TD - CHILDREN'S DAY CELEBRATION</b>
<b>FRI</b>	15	<b>HOLIDAY - GURU NANAK'S BIRTHDAY</b>
<b>SAT</b>	16	<b>REMEDIAL TEACHING</b>
<b>SUN</b>	17	<b>HOLIDAY</b>
<b>MON</b>	18	<b>TD</b>
<b>TUE</b>	19	<b>TD - VISIT TO DELHI DARSHAN PARK</b>
<b>WED</b>	20	<b>TD - KAVYA TARANG</b>
<b>THU</b>	21	<b>TD - ROAD SAFETY AWARENESS</b>
<b>FRI</b>	22	<b>TD - ROAD SAFETY CAMPAIGN</b>
<b>SAT</b>	23	<b>HOLIDAY - FOURTH SATURDAY</b>
<b>SUN</b>	24	<b>HOLIDAY</b>
<b>MON</b>	25	<b>TD</b>
<b>TUE</b>	26	<b>TD - DAY CAMP</b>
<b>WED</b>	27	<b>TD - VISIT TO DELHI DARSHAN PARK</b>
<b>THU</b>	28	<b>TD - LEADERSHIP CUM ORIENTATION CAMP</b>
<b>FRI</b>	29	<b>TD - EACH ONE TEACH ONE</b>
<b>SAT</b>	30	<b>REMEDIAL TEACHING</b>

**Working Days**    **22**
**NATIONAL & INTERNATIONAL DAYS**

<b>THU</b>	14	<b>Children's Day</b>
<b>SAT</b>	16	<b>Law Day</b>

**Wednesday Activities are for Level-II to Class-II**
**Tuesday Activities are for Classes III to V**
**Thursday Activities are for Classes VI to VIII**
**Friday Activities are for Classes IX to XII**
**Sports Activities (Matches) will be organised on monthly basis**
*Please Note : Holidays are subject to change as per Govt. notifications.*



<b>SUN</b>	1	<b>HOLIDAY</b>
<b>MON</b>	2	<b>TD - MINI FOOTBALL TOURNAMENT</b>
<b>TUE</b>	3	<b>TD - MINI FOOTBALL TOURNAMENT</b>
<b>WED</b>	4	<b>TD - MIND BODY SOUL</b>
<b>THU</b>	5	<b>TD - ATHLETIC MEET</b>
<b>FRI</b>	6	<b>TD</b>
<b>SAT</b>	7	<b>PARENTS VS STUDENTS SPORTS EVENT</b>
<b>SUN</b>	8	<b>HOLIDAY</b>
<b>MON</b>	9	<b>TD</b>
<b>TUE</b>	10	<b>TD - ATHLETIC MEET</b>
<b>WED</b>	11	<b>TD - ATHLETIC MEET</b>
<b>THU</b>	12	<b>TD</b>
<b>FRI</b>	13	<b>TD</b>
<b>SAT</b>	14	<b>SECOND SATURDAY - HOLIDAY</b>
<b>SUN</b>	15	<b>HOLIDAY</b>
<b>MON</b>	16	<b>TD - PT-2 COMMENCES</b>
<b>TUE</b>	17	<b>TD</b>
<b>WED</b>	18	<b>TD - CHRISTMAS CAROLS</b>
<b>THU</b>	19	<b>TD</b>
<b>FRI</b>	20	<b>TD</b>
<b>SAT</b>	21	<b>REMEDIAL TEACHING</b>
<b>SUN</b>	22	<b>HOLIDAY</b>
<b>MON</b>	23	<b>TD</b>
<b>TUE</b>	24	<b>TD - HWD/ CHRISTMAS CELEBRATIONS</b>
<b>WED</b>	25	<b>X-MAS DAY/ HOLIDAY</b>
<b>THU</b>	26	<b>TD - DAY WITH CARPENTER</b>
<b>FRI</b>	27	<b>TD</b>
<b>SAT</b>	28	<b>FOURTH SATURDAY - HOLIDAY</b>
<b>SUN</b>	29	<b>HOLIDAY</b>
<b>MON</b>	30	<b>STAFF PICNIC</b>
<b>TUE</b>	31	<b>HOLIDAY</b>

<b>Working Days</b>	<b>22</b>	<b>Wednesday Activities are for Level-II to Class-II</b>
<b>NATIONAL &amp; INTERNATIONAL DAYS</b>		<b>Tuesday Activities are for Classes III to V</b>
<b>SUN</b>	1	World AIDS Day
<b>TUE</b>	3	Worlds Disabled Day
<b>THU</b>	5	Navy Day/ International Volunteer's Day
<b>SAT</b>	7	Flag Day
<b>TUE</b>	10	UN Human Right's Day
<b>MON</b>	23	Kisan Day
<b>WED</b>	25	Christmas Day
<b>TUE</b>	31	New Year Eve
		<b>Thursday Activities are for Classes VI to VIII</b>
		<b>Friday Activities are for Classes IX to XII</b>
		<b>Sports Activities (Matches) will be organised on monthly basis</b>

*Please Note : Holidays are subject to change as per Govt. notifications.*

<b>WED</b>	1	<b>HOLIDAY</b>
<b>THU</b>	2	<b>HOLIDAY</b>
<b>FRI</b>	3	<b>HOLIDAY</b>
<b>SAT</b>	4	<b>HOLIDAY</b>
<b>SUN</b>	5	<b>HOLIDAY</b>
<b>MON</b>	6	<b>TD - SCHOOL REOPENS FOR IX TO XII</b>
<b>TUE</b>	7	<b>TD</b>
<b>WED</b>	8	<b>TD</b>
<b>THU</b>	9	<b>TD</b>
<b>FRI</b>	10	<b>TD</b>
<b>SAT</b>	11	<b>HOLIDAY - SECOND SATURDAY</b>
<b>SUN</b>	12	<b>HOLIDAY</b>
<b>MON</b>	13	<b>TD</b>
<b>TUE</b>	14	<b>HOLIDAY - MAKAR SANKRANTI</b>
<b>WED</b>	15	<b>TD - SCHOOL REOPENS FOR LEVEL II TO CLASS VIII</b>
<b>THU</b>	16	<b>TD - SCRATCH YOUR BRAIN</b>
<b>FRI</b>	17	<b>TD - VALUE DOMAIN</b>
<b>SAT</b>	18	<b>PTM-4</b>
<b>SUN</b>	19	<b>HOLIDAY</b>
<b>MON</b>	20	<b>TD</b>
<b>TUE</b>	21	<b>TD - DAY WITH GARDENER</b>
<b>WED</b>	22	<b>TD - DAY WITH A BAKER</b>
<b>THU</b>	23	<b>TD - WORKSHOP ON FINANCIAL LITERACY</b>
<b>FRI</b>	24	<b>TD - INTER-HOUSE FOOTBALL MATCH</b>
<b>SAT</b>	25	<b>HOLIDAY - FOURTH SATURDAY</b>
<b>SUN</b>	26	<b>REPUBLIC DAY- HOLIDAY</b>
<b>MON</b>	27	<b>TD</b>
<b>TUE</b>	28	<b>TD - RHYTHM DIVINE</b>
<b>WED</b>	29	<b>TD - VISIT TO QUTUB MINAR</b>
<b>THU</b>	30	<b>TD - INTER-HOUSE CRICKET MATCH</b>
<b>FRI</b>	31	<b>TD - DISASTER MANAGEMENT</b>

<b>Working Days</b>		<b>20</b>	<b>Wednesday Activities are for Level-II to Class-II</b>
<b>NATIONAL &amp; INTERNATIONAL DAYS</b>			<b>Tuesday Activities are for Classes III to V</b>
<b>WED</b>	1	<b>New Year Day</b>	<b>Thursday Activities are for Classes VI to VIII</b>
<b>SUN</b>	12	<b>National Youth Day</b>	<b>Friday Activities are for Classes IX to XII</b>
<b>WED</b>	15	<b>Army Day</b>	<b>Sports Activities (Matches) will be organised on monthly basis</b>
<b>SUN</b>	26	<b>Republic Day</b>	
<b>SUN</b>	26	<b>International Customs Day</b>	
<b>THU</b>	30	<b>Martyrs' day</b>	

*Please Note : Holidays are subject to change as per Govt. notifications.*

<b>SAT</b>	1	<b>FOND REVERIE</b>
<b>SUN</b>	2	<b>HOLIDAY</b>
<b>MON</b>	3	<b>TD</b>
<b>TUE</b>	4	<b>TD - PREPSTERS' DAY PRACTICE BEGINS</b>
<b>WED</b>	5	<b>TD - GRADUATION DAY PRACTICE BEGINS</b>
<b>THU</b>	6	<b>TD - INTER-HOUSE BASKETBALL MATCH</b>
<b>FRI</b>	7	<b>TD - INTER-HOUSE BASKETBALL MATCH</b>
<b>SAT</b>	8	<b>TD - PREPSTERS' SPORTS DAY</b>
<b>SUN</b>	9	<b>HOLIDAY</b>
<b>MON</b>	10	<b>TD</b>
<b>TUE</b>	11	<b>TD</b>
<b>WED</b>	12	<b>TD</b>
<b>THU</b>	13	<b>TD</b>
<b>FRI</b>	14	<b>TD</b>
<b>SAT</b>	15	<b>REMEDIAL TEACHING</b>
<b>SUN</b>	16	<b>HOLIDAY</b>
<b>MON</b>	17	<b>TD</b>
<b>TUE</b>	18	<b>TD</b>
<b>WED</b>	19	<b>TD</b>
<b>THU</b>	20	<b>TD</b>
<b>FRI</b>	21	<b>TD</b>
<b>SAT</b>	22	<b>FOURTH SATURDAY - HOLIDAY</b>
<b>SUN</b>	23	<b>HOLIDAY</b>
<b>MON</b>	24	<b>TD - FINAL EXAMINATION COMMENCES</b>
<b>TUE</b>	25	<b>TD</b>
<b>WED</b>	26	<b>HOLIDAY - MAHASHIVRATRI</b>
<b>THU</b>	27	<b>TD</b>
<b>FRI</b>	28	<b>TD</b>

**Working Days 22**
**NATIONAL & INTERNATIONAL DAYS**

<b>SAT</b>	1	<b>Indian Coast Guard Day</b>
<b>MON</b>	24	<b>Central Excise Day</b>
<b>FRI</b>	28	<b>National Science Day</b>

**Wednesday Activities are for Level-II to Class-II**
**Tuesday Activities are for Classes III to V**
**Thursday Activities are for Classes VI to VIII**
**Friday Activities are for Classes IX to XII**
**Sports Activities (Matches) will be organised on monthly basis**
*Please Note : Holidays are subject to change as per Govt. notifications.*

<b>SAT</b>	1	<b>REMEDIAL TEACHING</b>
<b>SUN</b>	2	<b>HOLIDAY</b>
<b>MON</b>	3	<b>TD</b>
<b>TUE</b>	4	<b>TD</b>
<b>WED</b>	5	<b>TD</b>
<b>THU</b>	6	<b>TD</b>
<b>FRI</b>	7	<b>TD</b>
<b>SAT</b>	8	<b>SECOND SATURDAY - HOLIDAY</b>
<b>SUN</b>	9	<b>HOLIDAY</b>
<b>MON</b>	10	<b>TD</b>
<b>TUE</b>	11	<b>TD</b>
<b>WED</b>	12	<b>TD</b>
<b>THU</b>	13	<b>TD</b>
<b>FRI</b>	14	<b>HOLIDAY - HOLI</b>
<b>SAT</b>	15	<b>GRADUATION DAY</b>
<b>SUN</b>	16	<b>HOLIDAY</b>
<b>MON</b>	17	<b>ORIENTATION FOR NEW PARENTS</b>
<b>TUE</b>	18	<b>TD - SCHOOL BEGINS FOR CLASS X AND XII</b>
<b>WED</b>	19	<b>TD</b>
<b>THU</b>	20	<b>TD</b>
<b>FRI</b>	21	<b>TD</b>
<b>SAT</b>	22	<b>FOCUS ON ACHIEVEMENT - PTM 5</b>
<b>SUN</b>	23	<b>HOLIDAY</b>
<b>MON</b>	24	<b>INTRODUCTION SESSION FOR NEW STUDENTS</b>
<b>TUE</b>	25	<b>TD</b>
<b>WED</b>	26	<b>TD</b>
<b>THU</b>	27	<b>TD</b>
<b>FRI</b>	28	<b>TD</b>
<b>SAT</b>	29	<b>HOLIDAY</b>
<b>SUN</b>	30	<b>HOLIDAY</b>
<b>MON</b>	31	<b>EID UL FITR</b>

Working Days		22	Wednesday Activities are for Level-II to Class-II
NATIONAL & INTERNATIONAL DAYS			
MON	4	National Safety Day	Tuesday Activities are for Classes III to V
FRI	8	International Women’s Day	
SUN	10	Ramakrishna Paramahansa’s Birthday	Thursday Activities are for Classes VI to VIII
MON	18	World Disabled Day	
THU	21	World Forestry day	Friday Activities are for Classes IX to XII
THU	21	Elimination of Racial / Discrimination Day	
FRI	22	World Water Day	Sports Activities (Matches) will be organised on monthly basis

*Please Note : Holidays are subject to change as per Govt. notifications.*





**BGS INTERNATIONAL PUBLIC SCHOOL**

**Sector-5, Dwarka, New Delhi-110075**

**Tel.: 011-45629822 | 45629833 | 45622601**

**E-mail : [bgsips2003@yahoo.com](mailto:bgsips2003@yahoo.com)**

**Web site : [www.bgsips.net](http://www.bgsips.net)**